

Commercial-in-Confidence



Practice 2000

Workstation Installation Guide

Global Health Limited
Level 2, 607 Bourke Street
Melbourne VIC Australia 3000

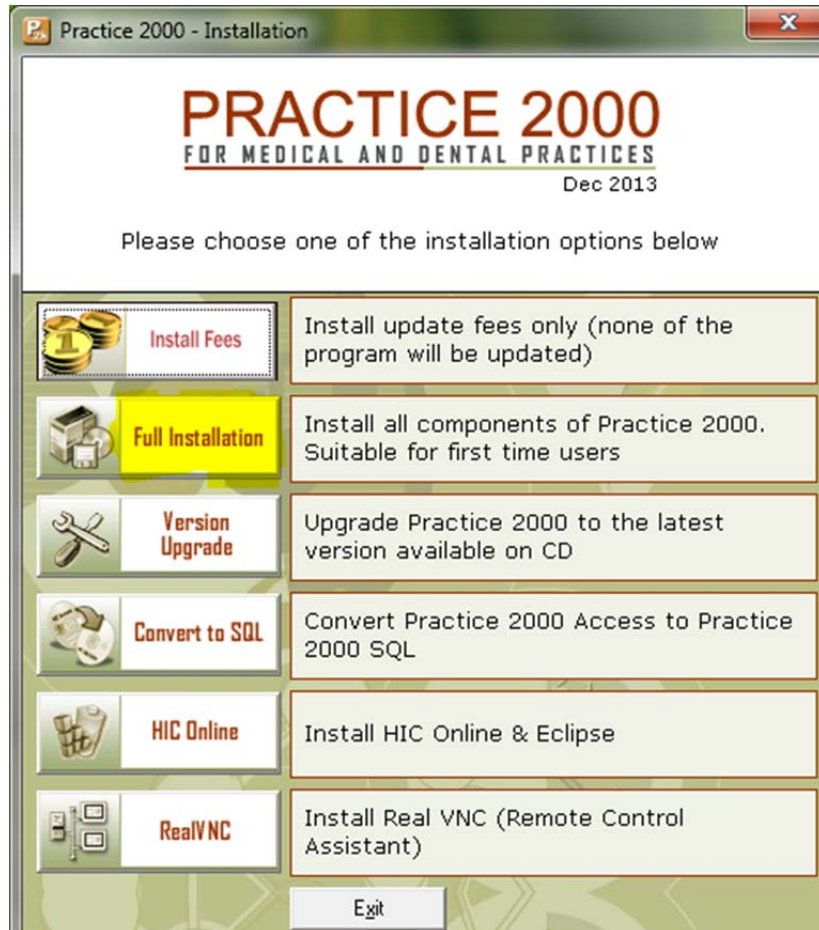
T: +61 3 9675 0600 | F: +61 39675 0699

www.global-health.com | practice2000.support@global-health.com

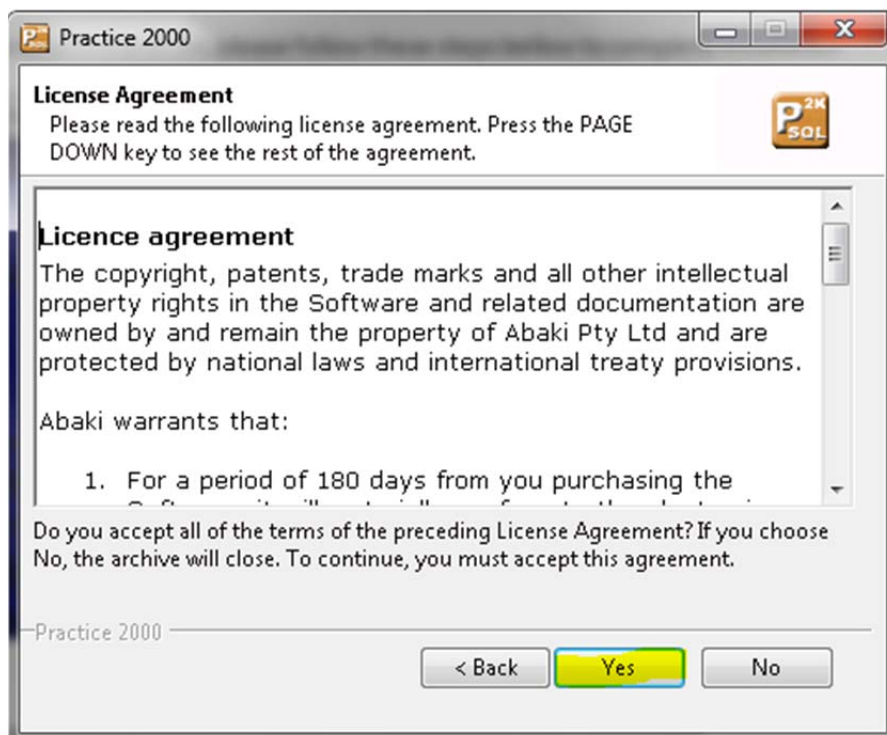
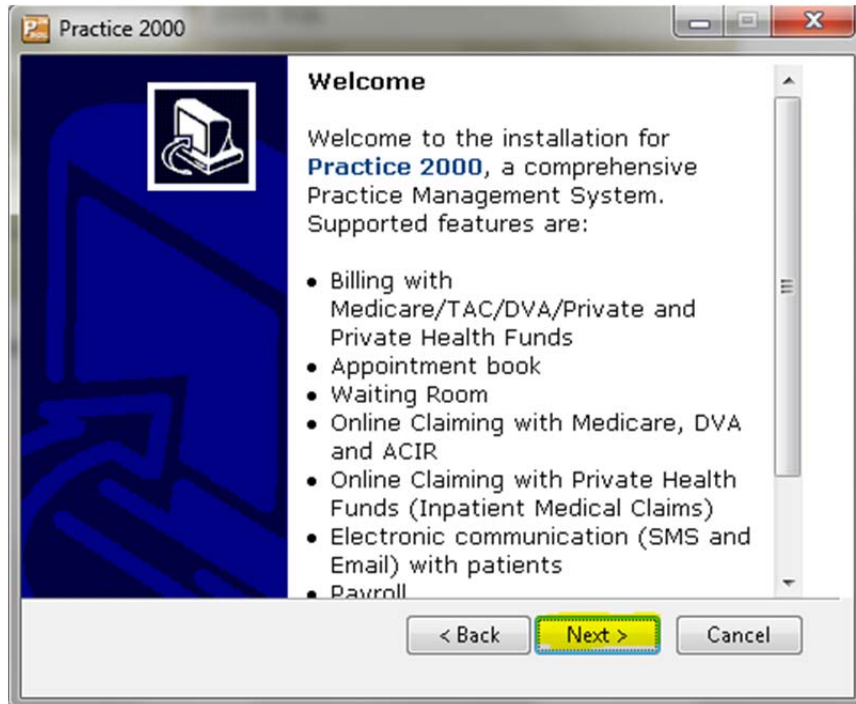
Install Practice 2000 on your workstation

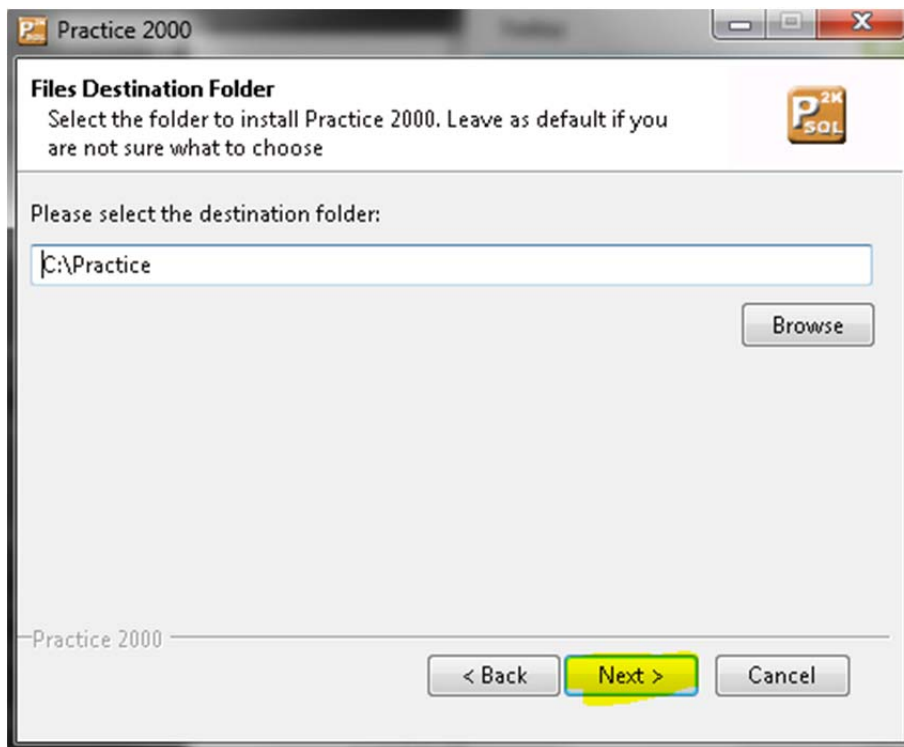
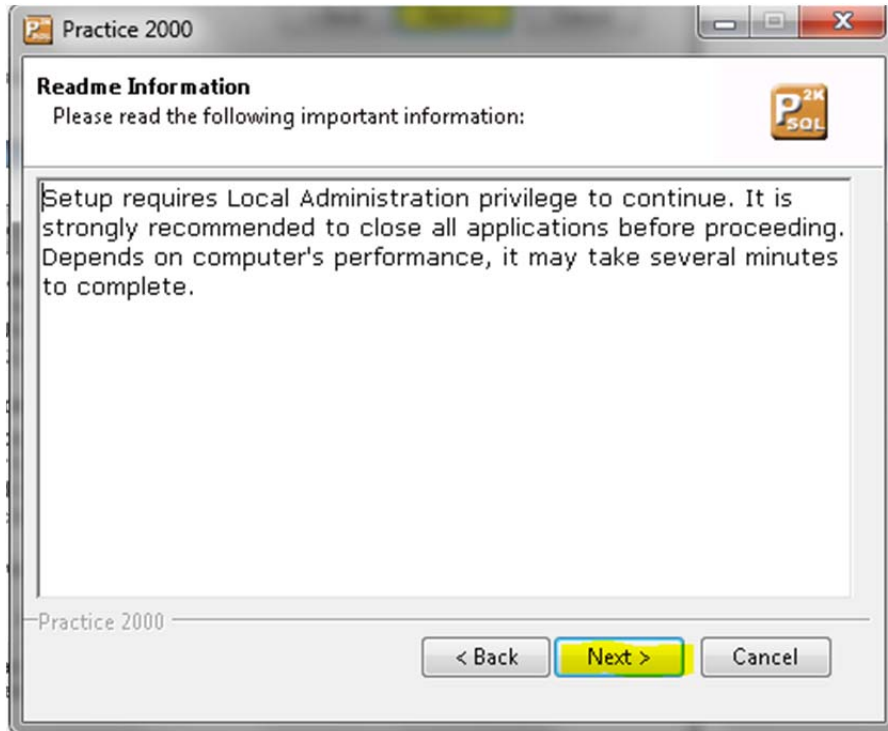
You can install Practice 2000 from DVD or download setup file from FTP (Please contact us to get the download link)

When you run **Install.exe** from DVD it will show you the window below
Please select **Full Installation** to run setup



After select Full Installation, please follow these steps bellow to complete installation

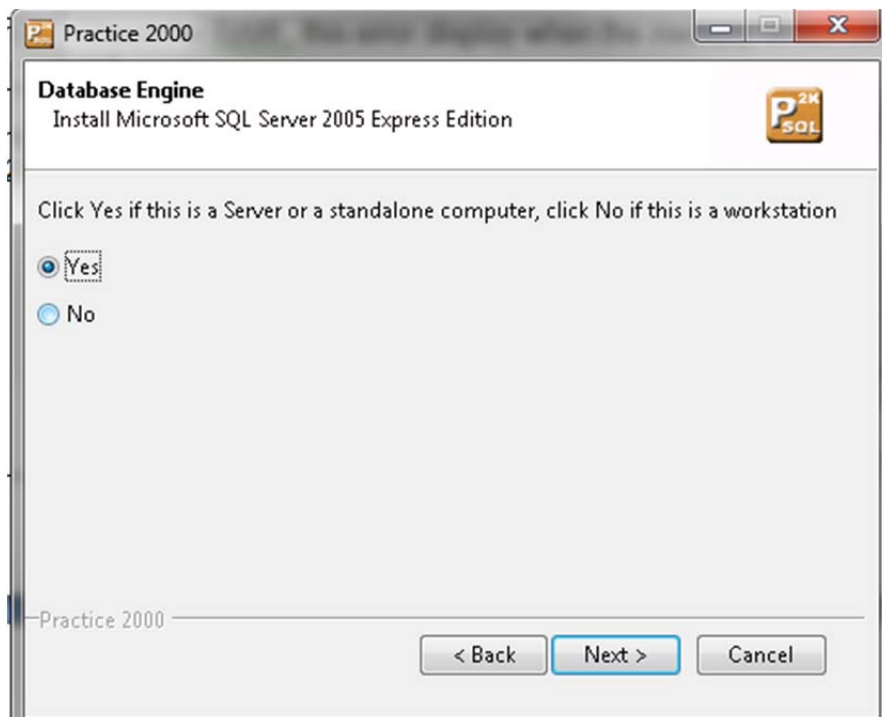






On this step please read carefully to make correct selection.

If you are installing practice 2000 on **WorkStation** please say **No**, otherwise say **Yes** for **Server** installation



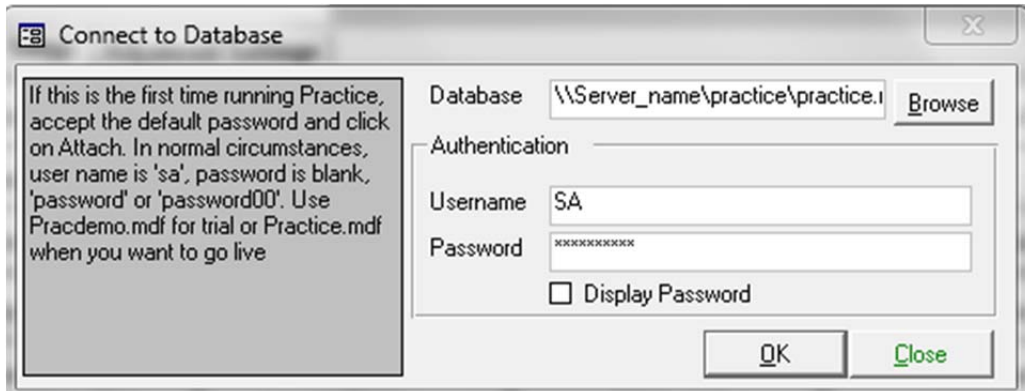
After installation, please open practice 2000 and attach database

The location for Database should be

\\Server_Name\Practice\Practice.mdf

Please replace **"Server_Name"** by name of your server

For Username and Password, you can go to your server, open Practice 2000 and go to [Admin task >> Setup>> Attach database >> tick on Display password](#)



Note:

On new workstation, when you attach database it can get an error message

To connect to this server you must use [SQL Server Management Studio](#) or [SQL Server Management Objects \(SMO\)](#)

Please download [Server 2005 Backward Compatibility Pack](#) via the link below, then install to new workstation and attach database again (Make sure you choose correct version 32 or 64bit)

<http://www.softpedia.com/get/Internet/Servers/Server-Tools/Backward-Compatibility-Components.shtml>