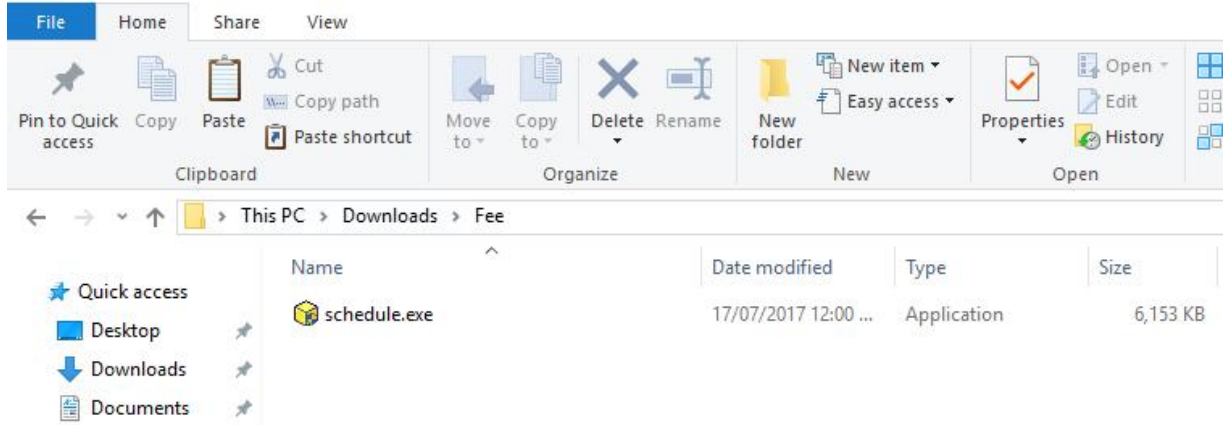
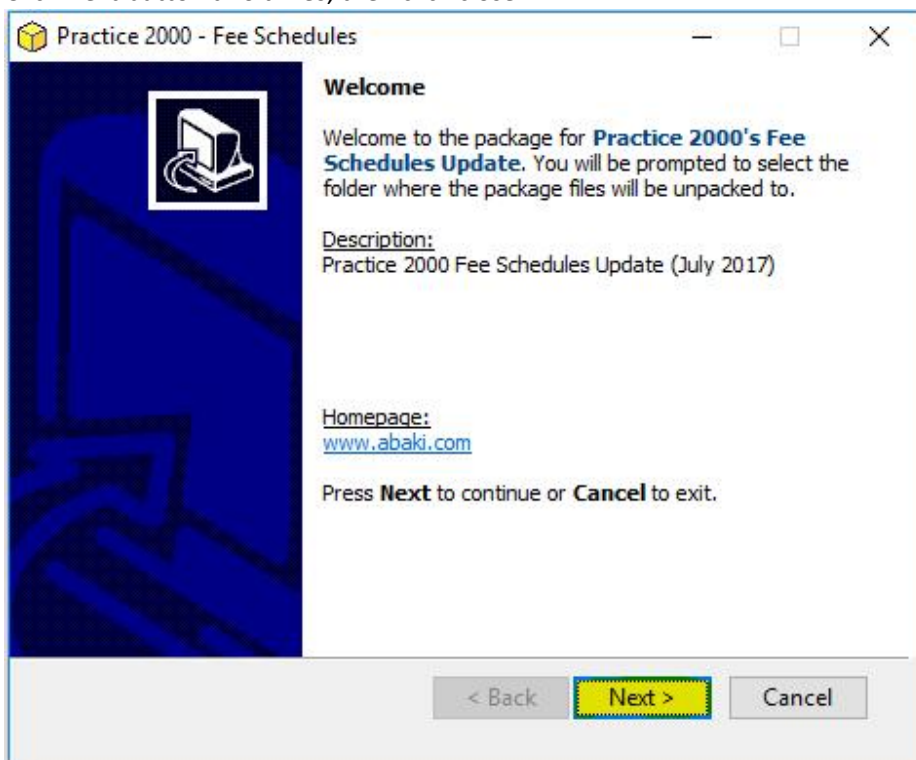


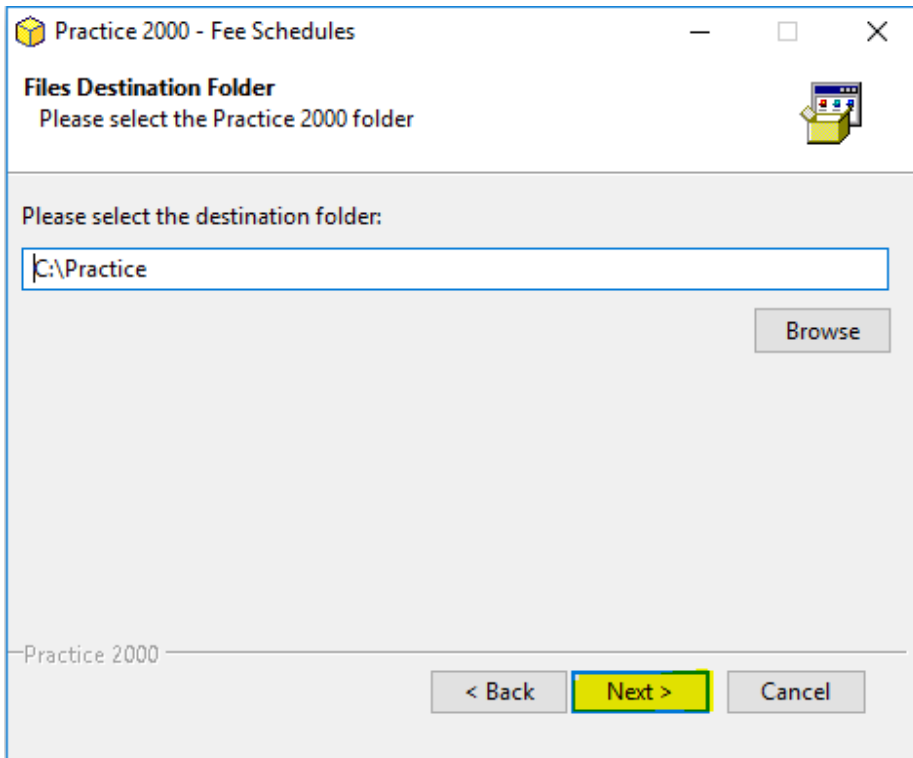
How to update Fee schedule in Practice 2000

1. Download new fee schedule from our website
<http://practice2000.com/Resources/Downloads.aspx>
2. After download Schedule.exe to your computer, please double click on that file to run

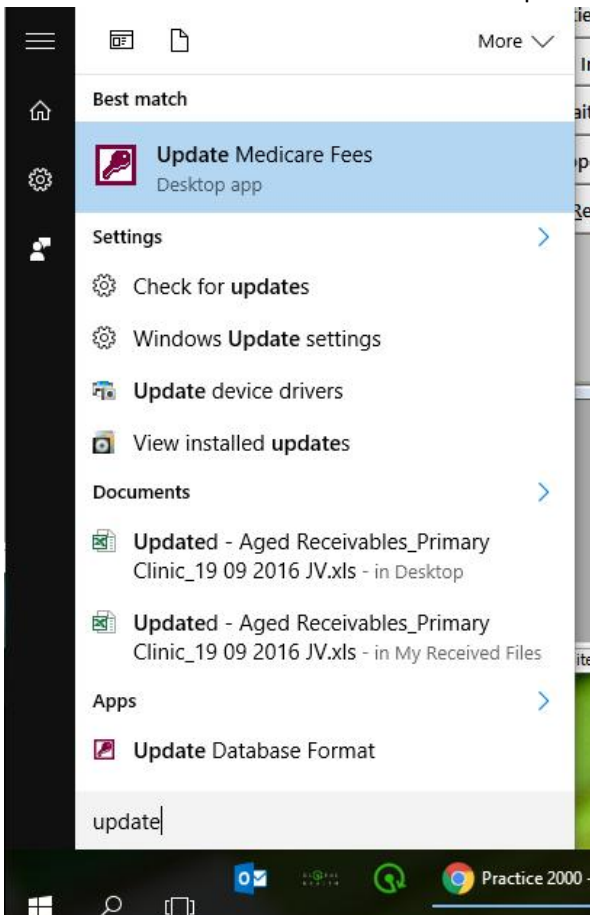


3. Click Next button two times, then click close



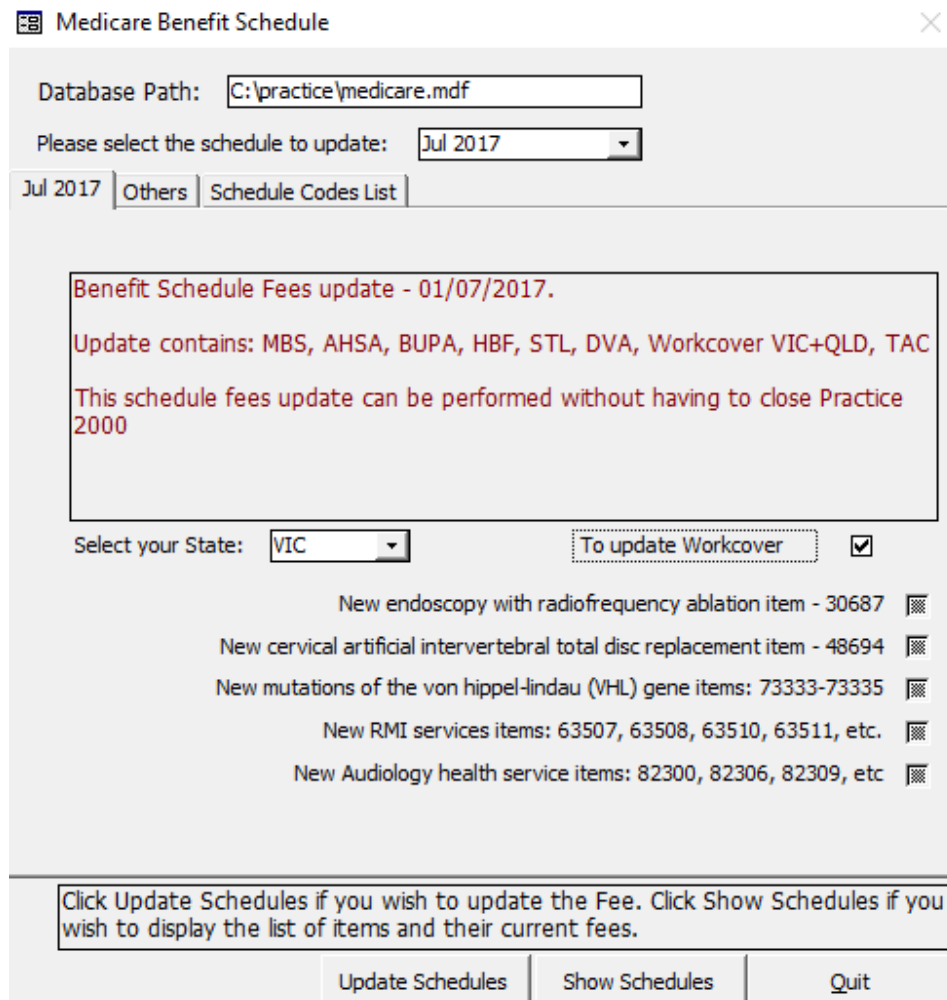


4. Click on start Window button then search “Update”, then click to “Update Medicare Fees”



- Please select
 - >> The schedule to update >> July 2017.
 - >> Select your State
 - >> Tick on the box To update Workcover

Then click on Update Schedules button at the bottom to start update.



- After Update process is finished, please close Practice 2000 then reopen it again.